



GP series GP 12400 12V 40AH



Valve Regulated Lead Acid Battery

Maintenance-Free Sealed Lead Acid Battery.

Absorbent Glass Mat (AGM) technology for efficient gas recombination of up to 99%.

Design for Standby Power Applications

【Design Life】

Up to 5 Years in Standby Service at 25°C

Eurobat (20°C) : 3-5 years, Standard Commercial

【Operating Temperature Range】

Nominal Operating Temperature : 25°C (77°F)

Discharge : -15°C ~ 50°C (5°F~122°F)

Charge: -15°C ~ 40°C (5°F~104°F)

Storage: -15°C ~ 40°C (5°F~104°F)

【Float Charging Voltage】

13.5 ~ 13.8 VDC/Unit at 25°C (77°F)

【Equalization Charging Voltage】

14.4 ~ 15.0 VDC/Unit at 25°C (77°F)

【Self Discharge】

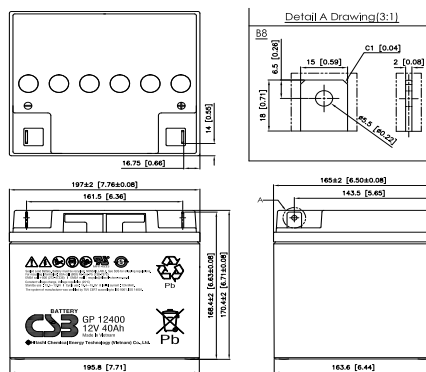
Less than 10% after 90 days, can be stored up to 6 months at 25°C (77°F);

Fully recharging is required before usage, and charged sooner if stored at higher temperature than 25°C (77°F).

Specification

Design according with IEC 61056-1/2: 2012

Nominal Voltage	12V (6 cells per unit)		
Nominal Capacity	40 Ah @20hr-rate to 1.75V per cell @25°C (77°F)		
Weight	Approx. 12.74 Kg (28.08 lbs)		
Maximum Discharge Current	400A (5sec)		
Internal Resistance	Approx. 8.5mΩ		
Short Circuit Current	1012A		
Maximum Charge Current	12.0A		
Terminal types	B8 terminal to accept M5 bolt		
Terminal Breaking Torque	59 Kgf-cm / 51 Lbf-in / 5.73 N-m		
Container Material	ABS (UL 94-HB) & Flame Retardant (94-V0) available upon request		
Dimensions	Length (L)	197.0±2.0 mm	7.76±0.08 inch
	Width (W)	165.0±2.0 mm	6.50±0.08 inch
	Container Height (h)	170.4±2.0 mm	6.71±0.08 inch
	Overall Height (H)	170.4±2.0 mm	6.71±0.08 inch



Constant Current Discharge Characteristics Unit: A (25°C, 77°F)

F.V/Time	5 MIN	10MIN	15MIN	30MIN	60MIN	90MIN	2HR	3HR	5HR	8HR	10HR	20HR
1.60V	172	118	87.8	51.7	30.4	22.3	17.7	12.8	8.31	5.53	4.54	2.43
1.67V	157	112	85.7	51.1	30.2	22.2	17.6	12.7	8.27	5.50	4.52	2.42
1.70V	149	109	84.2	50.7	30.0	22.1	17.5	12.6	8.24	5.49	4.51	2.41
1.75V	134	101	80.7	49.5	29.6	21.9	17.4	12.5	8.19	5.45	4.48	2.40
1.80V	121	91.4	75.1	47.3	28.7	21.5	17.1	12.4	8.07	5.37	4.41	2.36
1.85V	103	81.4	66.2	43.8	27.2	20.6	16.4	11.9	7.79	5.19	4.26	2.28

Constant Power Discharge Characteristics Unit: W (25°C, 77°F)

F.V/Time	5MIN	10MIN	15MIN	30MIN	60MIN	90MIN	2HR	3HR	5HR	8HR	10HR	20HR
1.60V	1703	1231	955	581	347	257	204	148	98.0	65.4	53.9	29.1
1.67V	1596	1185	939	576	345	256	203	147	97.5	65.2	53.7	29.0
1.70V	1542	1155	925	572	344	255	202	146	97.3	65.1	53.6	28.9
1.75V	1450	1092	886	561	340	254	201	145	96.9	64.8	53.4	28.8
1.80V	1332	1013	826	540	332	250	199	144	95.9	64.1	52.8	28.5
1.85V	1123	926	741	507	317	241	192	140	93.3	62.3	51.3	27.6

Please refer to the official site for the latest rating confirmation. URL: www.csb-battery.com

Issued: 190522

Sales Offices

日立化成能源科技股份有限公司
Hitachi Chemical Energy Technology Co., Ltd.

BUSINESS HEADQUARTERS

Tel: +886-2-2880-5600

Fax: +886-2-2888-3300

USA OFFICE

Tel: +1-817-244-7777 / 1-(800)3-CSB-USA (272872)

Fax: +1-817-244-4445

SHENZHEN OFFICE (CHINA)

Tel: +86-755-8831-6488, 8831-6775

Fax: +86-755-8831-6075

EUROPE (EMEA) OFFICE

Tel: +31(0)180-418-140

Fax: +31(0)180-418-327

SHANGHAI OFFICE (CHINA)

Tel: +86-21-5046-1622, 5046-0833

Fax: +86-21-5046-1046

TAIPEI OFFICE

Tel: +886-2-2880-5600

Fax: +866-2-2888-3300

BEIJING OFFICE (CHINA)

Tel: +86-10-5820-5336, 5820-5338

Fax: +86-10-5820-3053

Recognized under UL 1989,
and certified by ISO 9001, 14001.

